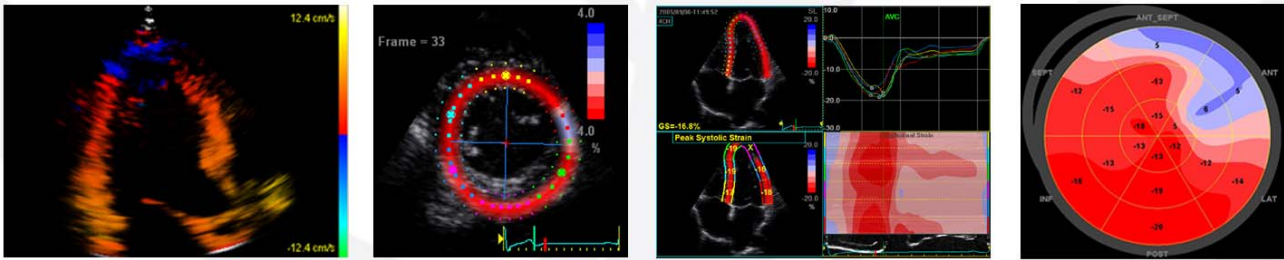


New insights in cardiac mechanics

Speckle Tracking and Tissue Doppler Imaging Tools in Clinical Practice
A practical interactive course with hands-on using EchoPAC Workstation



Thursday & Friday 26 - 27 April 2012
Le Meridien, Vienna, Austria

Faculty: G.R.Sutherland (KSA), B.Bijnens (ESP), F.Weidemann (GER)

Thursday April 26th

09.00 - 09.25	What is strain and how does strain imaging work ?
09.25 - 09.45	Data acquisition and optimisation for strain analysis
09.45 - 10.30	Cardiac function versus Deformation and Torsion
10.30 - 11.00	Coffee
11.00 - 11.20	Live Scanning
11.20 - 11:40	Echopac possibilities: analysis of the live data
11.40 - 12.00	Data Post processing: global and regional strain
12.00 - 12.45	Normal Cases
12.45 - 13.45	Lunch
13.45 - 14.05	Deformation patterns in Coronary Artery Disease
14.05 - 14.20	Post Systolic Deformation - What is it ?
14.20 - 14.45	Stress Echo, Infarction and Reperfusion Injury
14.45 - 15.45	CAD Cases
15.45 - 16.15	Coffee
16.15 - 16.45	Resynchronisation Therapy - LBBB mechanics
16.45 - 17.00	Resynchronisation Therapy - Identifying responders
17.00 - 18.00	CRT Cases

Friday April 27th

09.00 - 09.30	Hypertrophy: Hypertension, Athletes, Aortic Stenosis, Cardiomyopathies
09.30 - 09.45	Hypertrophic Myopathies - Clinical Cases
09.45 - 10.30	Hypertrophy Cases
10.30 - 11.00	Coffee
11.00 - 11.45	Load Dependency of Deformation Valvular Heart Disease
11.45 - 12.30	Valve disease Cases
12.30 - 13.45	Lunch
13.45 - 14.15	The Right Ventricle
14.15 - 14.45	Diastolic Function: Limitations of E/E'
14.45 - 15.00	3D imaging and deformation
15.00 - 16.00	Cases

Prominent scientists and clinical experts have agreed to lecture this courses and are looking forward to sharing their experience during the theoretical and practical hands-on sessions. Go to www.vividechoclub.net for further details.

Course fee: 700 EUR

Contact Data
GE Healthcare
nicola.berger@ge.com

Accomodation
Le Meridien Hotel
Vienna, Austria



GE Healthcare

Register at www.vividechoclub.net