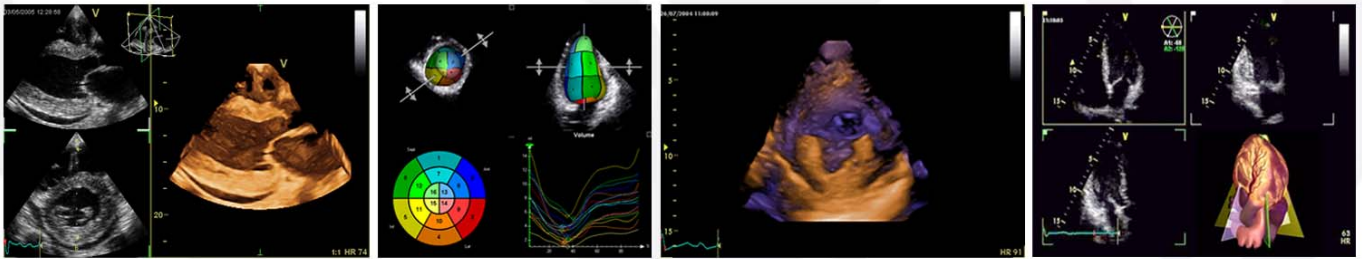


4D & Multidimensional Imaging in Clinical Practice



Monday & Tuesday 23 - 24 April 2012
Courtyard by Marriott Wien Messe, Vienna, Austria

Faculty: L.Badano (Udine, IT), A.Hagendorff (Leipzig, GER), J.Kasprzak (Lodz, PL)

Monday April 23rd

08.30 - 09.15 Principles of 4D echocardiography
 09.15 - 10.00 Multiplane, TriPlane, parametric TSI, TriPlane EF
 10.00 - 10.30 Coffee
 10.30 - 10.45 Live -> Multiplane Dataset Acquisition
 10.45 - 12.15 hands-on session: data acquisition & processing Bi-Plane, Tri-Plane
 12.15 - 13.15 Lunch
 13.15 - 14.00 4D - Image acquisition and display
 14.00 - 14.45 Volume Dataset Acquisition of the Valves; ZOOM acquisition; Mitral valve disease
 14.45 - 15.15 Aortic valve disease
 15.15 - 15.45 Tricuspid and pulmonic valve disease
 15.45 - 16.15 Coffee
 16.15 - 16.30 Live -> Volume Dataset Acquisition
 16.30 - 18.00 hands-on session: data acquisition & processing Valves - MV. AV. TV. PV Acquisition, Navigation, Postprocessing

Tuesday April 24th

09.00 - 10.00 4D Assessment of LV cavities (ventricle & atrium) Adv. 4D quantification of left ventricular volume (4D-LV-Q), LV-masses
 10.00 - 10.30 4D Assessment of right ventricular cavity RV-masses
 10.30 - 11.00 Coffee
 11.00 - 12.30 hands-on session: data acquisition & processing Volumens: LV & RV Acquisition, Navigation, Postprocessing
 12.30 - 13.30 Lunch
 13.30 - 14.00 Adult Congenital heart disease
 14.00 - 14.30 Standardization and implementation of advanced echocardiography in the routine of the echo lab
 14.30 - 15.30 4D-LV-mass analysis and 4D Strain ...further 4D developments. My best case

Prominent scientists and clinical experts have agreed to lecture these courses and are looking forward to sharing their experience during the theoretical and practical hands-on sessions. Go to www.vividechoclub.net for further details.

Course fee: 700 EUR

Contact Data
GE Healthcare
nicola.berger@ge.com

Accommodation
Courtyard by Marriott
Wien Messe, Vienna, Austria



GE Healthcare

Register at www.vividechoclub.net