



TPorter TEE probe transport device

Reduce cross-contamination risk



Avoid cross-contamination, thanks to insertion tube being separated from the rest



Minimize the risk of probe damage



Transport effectively and securely TEE probes

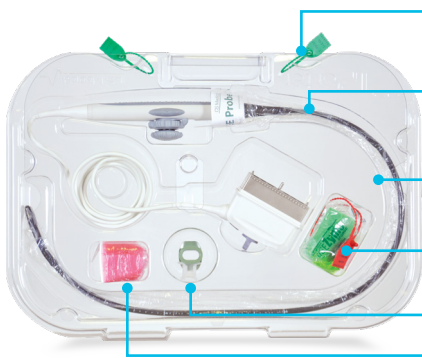
- Soiled probe to the reprocessing area
- High-level disinfected probe to the exam room



Helps clearly differentiate soiled probe vs. disinfected probe



WHEN TRANSPORTING A DISINFECTED PROBE:



Green tie bands to identify a disinfected probe

Insertion tube, separated from probe handle and cable

Probe cover protecting the disinfected insertion tube

TEEZyme enzymatic sponge for the pre-cleaning of the probe

Bite block(s)

Probe cover to transport back the soiled probe

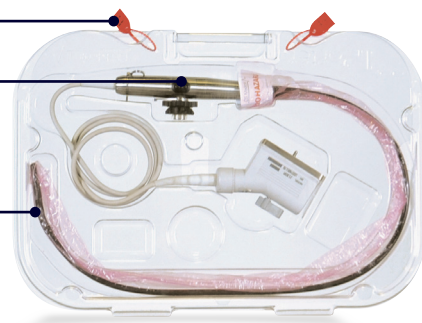


WHEN TRANSPORTING A SOILED PROBE:

Red tie bands to identify a soiled probe

TEE probe

Probe cover for soiled probe to isolate the insertion tube



TPorter TEE probe transport device

Reduce cross-contamination risk



Product	Reference
<p>TPorter® transportation suitcase</p> <p><i>Height 48.26 cm x width 69.85 cm x depth 9.53cm</i></p>	E8364DV
<p>TPorter® tie bands</p> <p>Seals TPorter® with green tie bands when transporting a disinfected probe, and red tie bands for a soiled probe</p> <p><i>Pack of 100 green and 100 red</i></p>	E8364DX
<p>PullUp™ Bio-Barrier cover</p> <p>Red cover indicating a soiled probe, to prevent exposure to biozardous material</p> <p><i>Pack of 100</i></p>	E8364DZ
<p>PullUp™ TEE probe cover</p> <p>Transparent cover indicating and protecting a disinfected probe</p> <p><i>Pack of 100</i></p>	E8364DY
<p>TEEZyme®</p> <p>Single-use cleaning sponge, to remove gross contaminants after extracting the probe from the patient</p> <p><i>Pack of 100</i></p>	E8364BM
<p>TPorter® carrier</p> <p>To hold the TPorter® to the ultrasound system</p>	E8364FE
<p>TransPorter™ Mobile Cart for TPorter®</p> <p>Can transport 4 TPorter® at the same time</p>	E8364EH

GE imagination at work

©2019 General Electric Company – All rights reserved.

General Electric Company reserves the right to change the specifications and features of this document or discontinue the product described at any time without notice or obligation. Contact your GE representative for the latest information.

GE and GE monogram are trademarks of General Electric Company.

TPorter is trademark of CS Medical LLC.

Trademarks of third party stay their property.

General Healthcare, division of General Electric Company. JB73076XE